

2012 Sunseeker Manhattan 63

Reference ID: RF1595578366

Builder: Sunseeker

£ 1,200,000.00

Length: 21.1 meters Year built: 2012 Guests: 8 in 4 cabins

Tax not paid



Key Features

Builder: Sunseeker	Length: 21.1 meters	Beam: 5.1 meters	
Model: Manhattan 63	Max speed: 33 kt	Cruise speed: 23 kt	Range: 270 nm
Year built: 2012	Guests 8	Cabins: 4	Crew: 2
Location: Hong Kong	Hull: Fiberglass Reinforced	Superstructure: GRP	Engine power: 2298 hp

Contact Details

Dominic Byrne

+447799954635

+44 7799954635

dominic@azuremarinegroup.com

Yacht Description

"VITALE" is a stunning example of the Sunseeker Manhattan 63, perfect model that packs innovation, luxury and performance into an exceptionally graceful frame. "VITALE" is a 1-owner vessel since new, therefore full maintenance records are available. She has been extremely well-maintained by an independent Guardiennage company and has always been winterised in the dry hangar during 8 months between the seasons. Engines + gearboxes + generator have serviced in 2020 & antifouling anodes have been renewed in 2020. "VITALE" is fully ready for the forthcoming season! This fantastic Manhattan 63 has the standard 4 cabin arrangement offering a midship full-beam master cabin, very large hull-side windows and has the more preferable semi-enclosed galley on the main deck. Saloon and entertainment space has been increased and enlarged, panoramic superstructure windows ensure an incredible feeling of openness. Her refined Light Oak Satin Interior is complimented with white cream upholstery and cream carpets. "VITALE" has ample space for long-distance cruising, the traditional Shaft Drives ensure incomparable seakeeping, not to mention the very useful Yacht Controller remote control to ease manoeuvrings in marinas. This Manhattan 63 is fully loaded and her Inventory includes bow & stern thrusters, Yacht Controller remote control, upgraded generator, satellite TV antenna, watermaker, underwater lights, washing-drying machine, dishwasher, wine cooler, ice maker, BBQ.

Specification

Overview

Name:	2012 Sunseeker Manhattan 63
Yacht type:	Performance Yacht
Category type:	Motor
Builder:	Sunseeker
Model:	Manhattan 63
Year built:	2012
Last Refitted:	2020
Reference ID:	RF1595578366
Location:	Hong Kong
Used/New:	Used yacht

Dimension

Overall length:	21.1 meters
Beam:	5.1 meters
Draught:	1.5 meters
Displacement:	38 ton(s)

Performance & Capacities:

Max speed:	33 kt
Cruising speed:	23 kt
Range:	270 nm
Fuel capacity:	3500 litres
Water capacity:	816 litres

Engines

Engine Make:	Caterpillar
Engine Model:	C18 ACERT
Engine Type:	Inboard
Engine Quantity:	2
Total power:	2298 hp

Construction & Design

Hull:	Fiberglass Reinforced
Superstructure:	GRP
Deck:	Teak
Hull type:	V-Shaped

Accommodation

Guests:	8
Cabins:	4
Crew:	2
Crew rooms:	1

Complete Details

Boat Name

VITALE

Specs

Builder: Sunseeker International
Hull Shape: Deep Vee

Dimensions

LOA: 69 ft 1 in
Beam: 16 ft 10 in
Maximum Draft: 5 ft 0 in
Displacement: 35000 kgs

Engines

Total Power: 2300 HP

Engine 1:
Engine Brand: CATERPILLAR
Year Built: 2012
Engine Model: 2 X 1150hp C18 ACERT
Engine Type: Inboard
Engine/Fuel Type: Diesel
Drive Type: Shaft Drive
Engine Power: 1150 HP
Engine 2:
Engine Brand: CATERPILLAR
Year Built: 2012
Engine Model: 2 X 1150hp C18 ACERT
Engine Type: Inboard
Engine/Fuel Type: Diesel
Drive Type: Shaft Drive
Engine Power: 1150 HP

Cruising Speed: 23 knots
Maximum Speed: 33 knots

Tanks

Fresh Water Tanks: (816 Litres)
Fuel Tanks: (3500 Litres)

Accommodation

Number of twin berths: 2
Number of double berths: 2
Number of cabins: 4
Number of heads: 3
Number of bathrooms: 3

Layout/Interior

Accommodation : 4 cabins for 8 people + 1 cabin for 2 crew Cabin layout : 1 master cabin (large bad) + 1 VIP cabin (large bad) + 1 guest cabins (twin beds) + 1 guest cabin (Bunk beds) + 1 crew cabin (twin beds)

Additional Extras

DECKS & EXTERIOR

BBQ Kenyon lava coal
Additional pair 10" mooring cleats fitted to the aft lower edge of the hull band facing aft
Bimini top in canvas with stainless steel frame work
Bow sunbathing cushions with folding back rests
Fresh water with outlets fwd & aft including deck wash hose kit
Low level white LED side desk lights 8 per side
Stern docking lights on radar arch for manoeuvring at night
Teak table in cockpit
UNDERWATER LIGHTS - Aqualuma LED wide angle x 4
Windlass + 100m anchor chain
Telescopic gangway 3.5 meters in stainless steel with teak grate walkway
Tender battery charger

CONSOLES & ELECTRONIC

Carbon fibre console panels
Raymarine G120 - 12.1" Colour Radar Chartplotter including GPM400 processor module and wired keyboard on the lower console +
2nd repeater G120 - 12" Colour display on the Flybridge with Raystar 125 GPS Diff receiver and 4kw 48" HD digital open scanner in lieu of standard

Raymarine autopilot P70R
Raymarine i70 multifunctional instruments
Raymarine RAY260 VHF with DSC function and 2.4 metre VHF antenna + Raymarine AIS with GPS and 2.4 metre VHF antenna
BOW & STERN THRUSTERS
YACHT CONTROLLER REMOTE CONTROL

INTERIOR

Interior Wood Finish - Oak Satin Finish in lieu of standard
Saloon, galley and crew wood flooring in Amtico
Upgraded mattresses in all cabins
Crew cabin fit out + air-conditioning
Dimmer switches on interior lighting
Granite top in galley and aft master Cabin - Nero Assolute in lieu of standard Hydraulic

ELECTRICAL

Reversible air-conditioning throughout
Miele dishwasher fitted in galley
Miele H4412B oven in galley in lieu of standard microwave
Wine cooler fitted in stairwell cabinet (48 bottles)
Ice maker with water purifier - General ecology ultrafine in-line system c/w spare cartridge
Miele washer-dryer
INTELLIAN I6 SATELLITE TV ANTENNA WITH 4 RECEIVERS (1 in salon + 3 in cabins)

ENGINE ROOM

IDROMA WATERMAKER 180 LTS / HR
ONAN GENERATOR UPGRADED TO 19 KW

TV & SOUND SYSTEM

Samsung HD 4K larger flat screen TV in salon on customized enlarged hi-lo mechanism
Bose 321 GS sound system + DVP player in saloon
Blue Ray DVP player in all cabins
Fusion DVD/CD/MP3/Radio tuner linked to cabin TV with stereo speakers with I-Pod dock
Sony flat screen TV in master cabin + Blue Ray DVD player + additional Bose speaker
TV + DVD player in crew cabin

Extras

- Cinema
- Stern thruster
- Tropical Air Conditioning
- Antifouling upgrade
- Fuel cleaning centrifuge
- Battery charger
- Hot and cold transom shower
- 220/240v shorepower
- International VHF
- Electric stern docking winches
- Hob extractor
- Underwater light
- Dimmers fo external lights

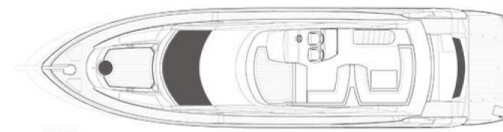




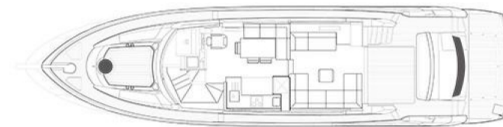




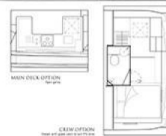
PROFILE



EXTERIOR



MAIN DECK



MAIN DECK OPTION

CABIN OPTION



LOWER DECK